

DIGITAL WALL TILES



**SANMARCO**  
CERAMIC

250 x 380 MM

CATALOGUE 2013

Incomparable  
beauty...

## ISO 9001 : 2000 Cerified Company

Sanmarco Ceramic is pioneer in introducing Eco Friendly Wall Tiles In India.

Eco-Sustainability Design and Innovation are The Core Values Which Sets Sanmarco Ceramic Apart From Competition.

At Sanmarco Ceramic We Ensure you to provide Finest Quality Tiles Using Environmental Friendly Technology and Process. A state of Art Dry Process Technology From Italy Helps Us to Reduce The Environmental Impact in the Extraction Phase Of Raw Material and it Helps Us to Use Recycled Material.

We Assure you That Choosing Sanmarco Ceramic Will your Smartest Decision. Together Lets Step On The Eco - Sustainable Future...

COMPANY PROFILE



Digital Wall Tiles



1002 - L



1002 - HL-1



1002 - D



1002 - L



1002 - HL-2



1002 - D



1002 - L



1002 - HL-3



1002 - D



1003 - L



1003 - HL-1



1003 - D



1003 - L



1003 - HL-2



1003 - D



1004 - L



1004 - HL-1



1004 - D



1005 - L



1005 - HL-1



1005 - D



1005 - L



1005 - HL-2



1005 - D



1005 - L



1005 - HL-3



1005 - D



1006 - L



1006 - HL-1



1006 - D



1006 - L



1006 - HL-2



1006 - D



1007 - L



1007 - HL-1



1007 - D



1008 - L



1008 - HL-1



1008 - D



1008 - L



1008 - HL-2



1008 - D



1009 - L



1009 - HL-1



1009 - D



1009 - L



1009 - HL-2



1009 - D



1010 - L



1010 - HL-1



1010 - D



1010 - L



1010 - HL-2



1010 - D



1011 - L



1011 - HL-1



1011 - D



1011 - L



1011 - HL-2



1011 - D



1012 - L



1012- HL-1



1012 - D



1012 - L



1012 - HL-2



1012 - D



1013 - L



1013 - HL-1



1013 - D



1013 - L



1013 - HL-2



1013 - D





1014 - L



1014 - HL-1



1014 - D



1014 - L



1014 - HL-2



1014 - D



1015 - L



1015 - HL-1



1015 - D



1015 - L



1015 - HL-2



1015 - D



1017 - L



1017 - HL-1



1017 - D



1018 - L



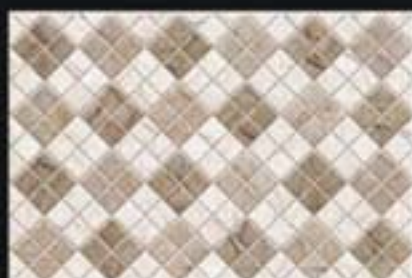
1018 - HL-1



1018 - D



1018 - L



1018 - HL-2



1018 - D



1018 - L



1018 - HL-3



1018 - D



1019 - L



1019 - HL-1



1019 - D



1019 - L



1019 - HL-2



1019 - D



1020 - L



1020 - HL-1



1020 - D



1020 - L



1020 - HL-2



1020 - D



1021 - L



1021 - HL-1



1021 - D



1021 - L



1021 - HL-2



1021 - D



1022 - L



1022 - HL-1



1022 - D



1022 - L



1022 - HL-2



1022 - D



1022 - L



1022 - HL-3



1022 - D



1023 - L



1023 - HL-1



1023 - D



1023 - L



1023 - HL-2



1023 - D



1023 - L



1023 - HL-3



1023 - D



1024 - L



1024 - HL-1



1024 - D



1024 - L



1024 - HL-2



1024 - D



1026 - L



1026 - HL-1



1026 - D



1026 - L



1026 - HL-2



1026 - D



1027 - L



1027 - HL-1



1027 - D



1027 - L



1027 - HL-2



1027 - D



1028 - L



1028 - HL-1



1028 - D



1028 - L



1028 - HL-2



1028 - D



1029 - L



1029 - HL-1



1029 - D



1029 - L



1029 - HL-2



1029 - D



1030 - L



1030 - HL-1



1030 - D



1030 - L



1030 - HL-2



1030 - D





1031 - L



1031 - HL-1



1031 - D



1031 - L



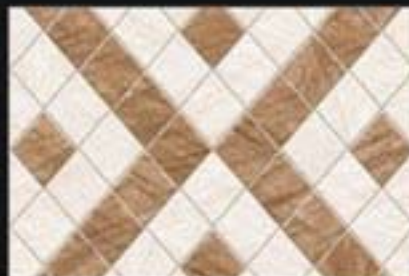
1031 - HL-2



1031 - D



1032 - L



1032 - HL-1



1032 - D



1032 - L



1032 - HL-2



1032 - D



1033 - L



1033 - HL-1



1033 - D



1033 - L



1033 - HL-2



1033 - D



1033 - L



1033 - HL-3



1033 - D



1034 - L



1034 - HL-1



1034 - D



1034 - L



1034 - HL-2



1034 - D



1035 - L



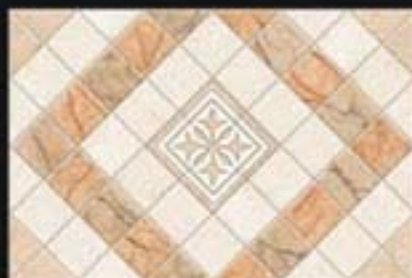
1035 - HL-1



1035 - D



1035 - L



1035 - HL-2



1035 - D



1036 - L



1036 - HL-1



1036 - D



1036 - L



1036 - HL-2



1036 - D



1037 - L



1037 - HL-1



1037 - D



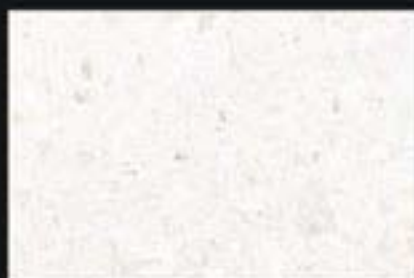
1038 - L



1038 - HL-1



1038 - D



1038 - L



1038 - HL-2



1038 - D



1039 - L



1039 - HL-1



1039 - D



1039 - L



1039 - HL-2



1039 - D



1040 - L



1040 - HL-1



1040 - D



1040 - L



1040 - HL-2



1040 - D



1040 - L



1040 - HL-1



1040 - D



1040 - L



1040 - HL-2



1040 - D



1041 - L



1041 - HL-1



1041 - D



1041 - L



1041 - HL-2



1041 - D



1042 - L



1042 - HL-1



1042 - D



1042 - L



1042 - HL-2



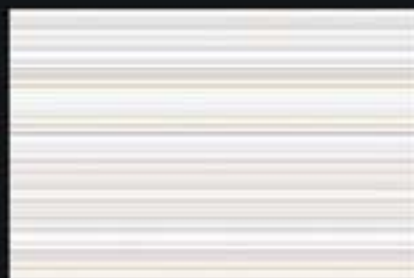
1042 - D



1043 - L



1043 - HL-1



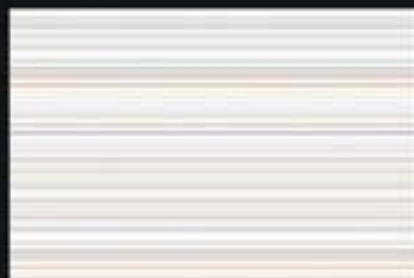
1043 - D



1043 - L



1043 - HL-2



1043 - D



1043 - L



1043 - HL-3



1043 - D



1044 - L



1044 - HL-1



1044 - D



1044 - L



1044 - HL-2



1044 - D



1045 - L



1045 - HL-1



1045 - D





1045 - L



1045 - HL-2



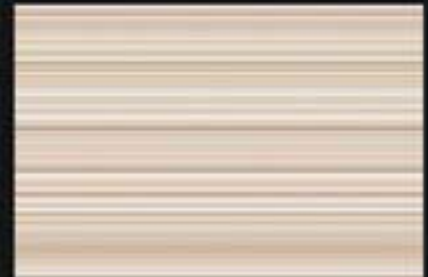
1045 - D



1045 - L



1045 - HL-3



1045 - D



1046 - L



1046 - HL-1



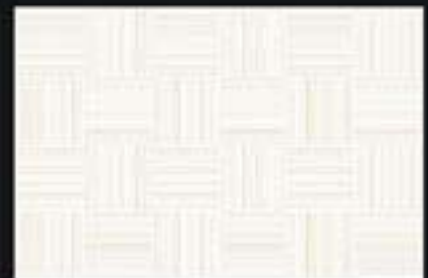
1046 - D



1046 - L



1046 - HL-2



1046 - D



1048 - L



1048 - HL-1



1050 - L



1050 - HL-1



1050 - D



1051 - L



1051 - HL-1



1051 - D



1051 - L



1051 - HL-2



1051 - D



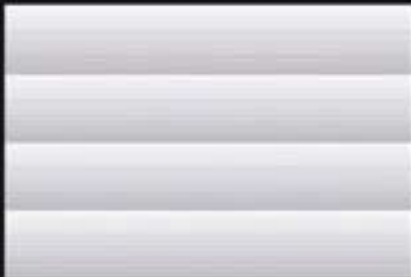
101 - L



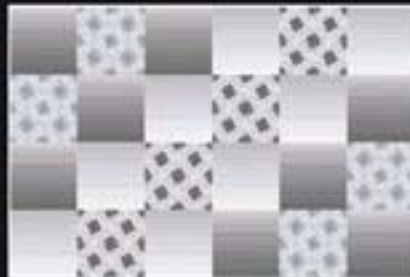
101 - K



101 - D



102 - L



102 - HL-1



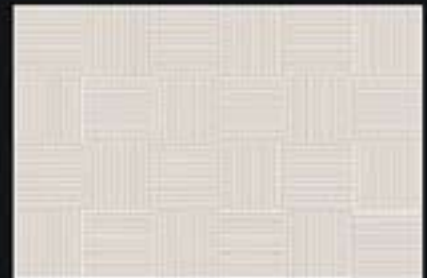
102 - D



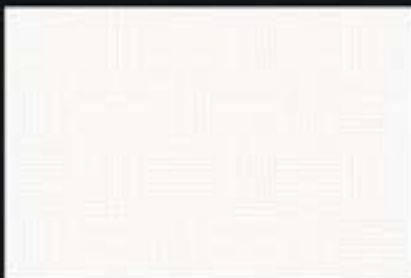
100 - L



103 - K



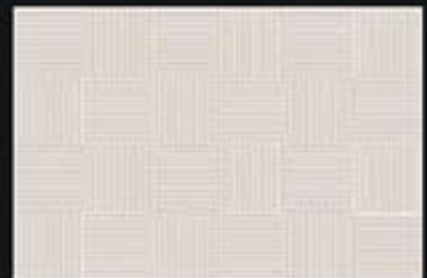
100 - D



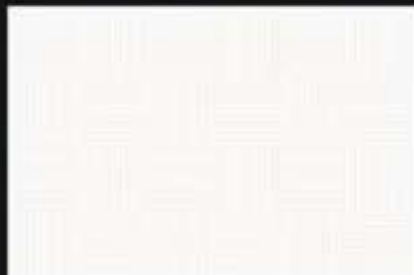
100 - L



104 - K



100 - D



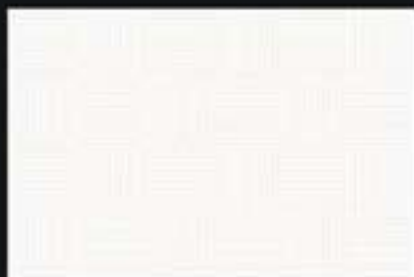
100 - L



105 - K



100 - D



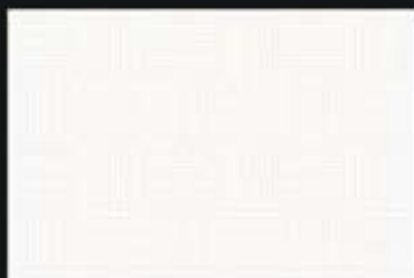
100 - L



106 - K



100 - D



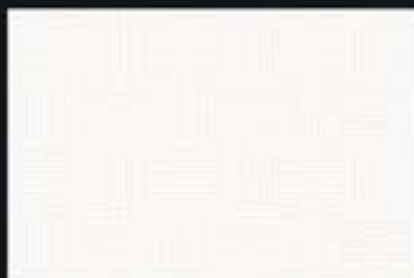
100 - L



107 - K



100 - D



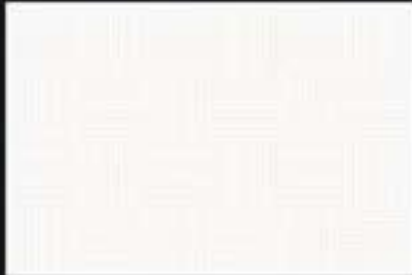
100 - L



108 - K



100 - D



100 - L



109 - K



100 - D



101 - L



110 - K



101 - D



101 - L



111 - K



101 - D



101 - L



112 - K



101 - D



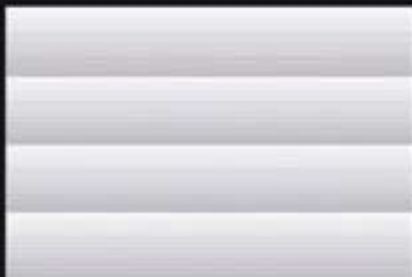
101 - L



113 - K



101 - D



102 - L



114 - K



102 - D



102 - L



115 - K



102 - D



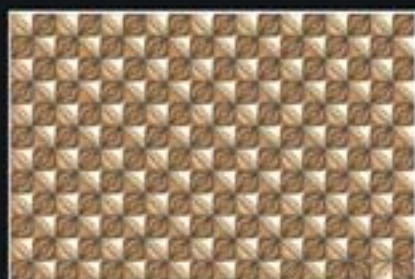
401 - L



402 - L



403 - L



401 - D



402 - D



403 - D



404 - L



405 - L



404 - D



405 - D



501



502



503



504



506



507



508



509



510



511



512



513





514



515



516



517



518



519



520



521



601



602



603



604



605



606



607



608



609



610



611



612



613



614



615



616



617



618



619



620



SANMARCO CERAMIC CO.  
56, 1st Floor  
Shakti Chambers-2,  
Near Radhe Hotel,  
8-A National Highway,  
Morbi-363642(Guj)India.

Fax. +91 - 11 - 47618 118

SANMARCO CERAMIC CO. (China)  
B1 Ying Ke Yi Jia,  
4th Ji Hua Road,  
Chancheng District,  
Foshan(Guangdong)  
China.

Tel. +86 - 757 - 82268911  
Fax. +86 - 757 - 82268916